

# Example State COVID-19 Dashboard

Department of Public Health

Last updated July 21, 2020 09:00 EST

Enter a county or zip code for more information

**Current COVID-19 Alert Level:**

See county alert levels [here](#)

Governor's reopening plan

**ORANGE (LEVEL 3)**

## Essential indicators (what are these?)

New cases by date

Linked/unlinked cases

New tests done

Percent of tests positive

Syndromic data

Daily hospitalizations

Beds with COVID-19 patients

Congregate facility data

Deaths

PCR test turnaround time

Time to isolation

Time to identify contacts

Cases from quarantined contacts

Healthcare worker infections

Mask use

In development

Visit our [data explorer](#) to see more detailed information

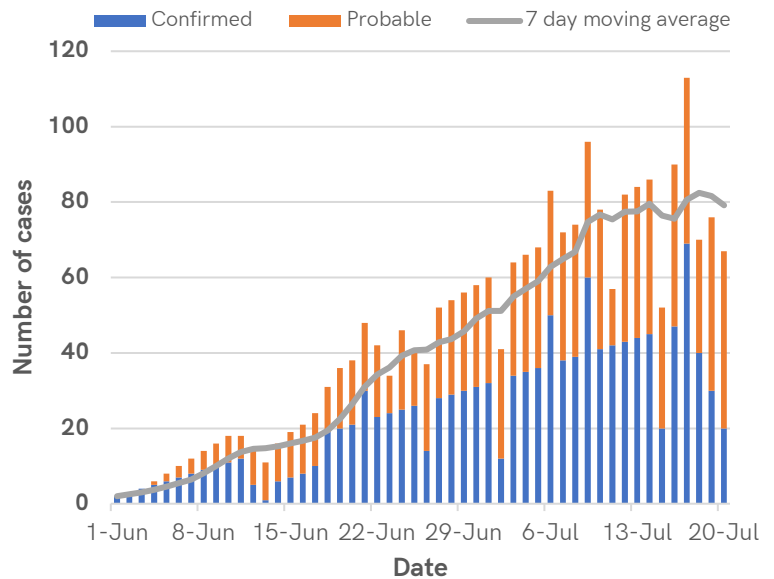
Total

By age, sex,  
race/ethnicity

By community  
vs. outbreaks

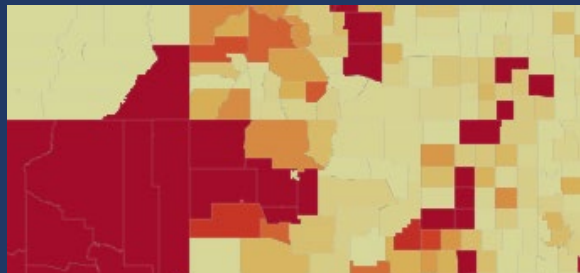
By county

New confirmed and probable cases by date reported, with 7-day moving average



View as: [figure](#) [table](#) [map](#) [download the data](#)

County risk alert status (hover/click on county for more info)



Key

[Click here to access downloadable data](#) (last updated July 21, 2020 at 09:00 EST)

To provide feedback including suggestions, omissions and errors, please contact us at [COVIDData@doh.gov](mailto:COVIDData@doh.gov)

# Example County COVID-19 Dashboard

Enter a zip code for more detailed information

Department of Public Health

Last updated July 21, 2020 09:00 EST

Current COVID-19 Alert Level:

See county alert levels [here](#)

Governor's reopening plan

**RED (LEVEL 4)**

## Essential indicators [\(what are these?\)](#)

New cases by date

Linked/unlinked cases

New tests done

Percent of tests positive

Syndromic data

Daily hospitalizations

Beds with COVID-19 patients

Congregate facility data

Deaths

PCR test turnaround time

Time to isolation

Time to identify contacts

Cases from quarantined contacts

Healthcare worker infections

Mask use

In development

Visit our [data explorer](#) to see more detailed information

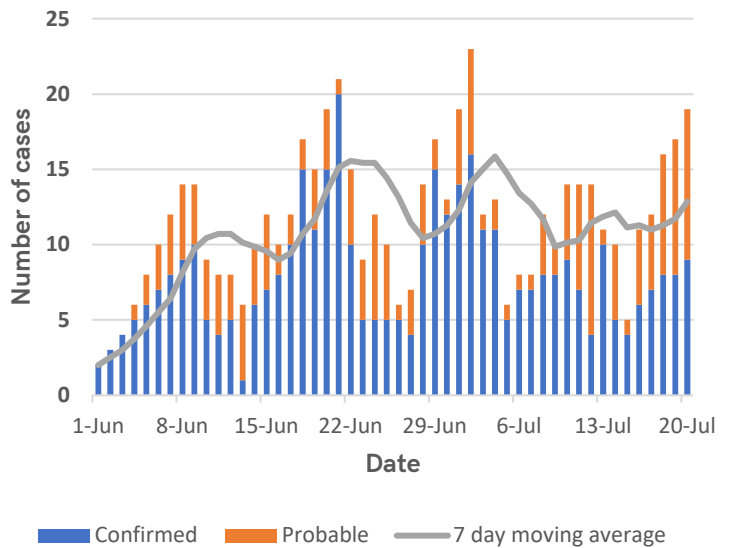
Total

By age, sex,  
race/ethnicity

By community  
vs. outbreaks

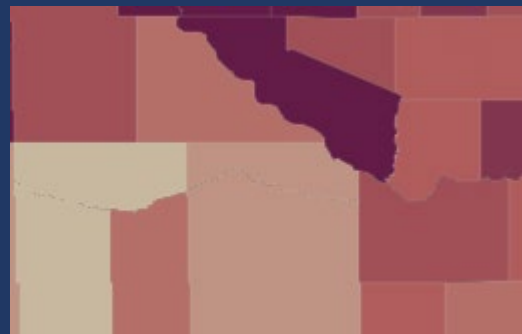
By zip code

New confirmed and probable cases by date reported, with 7-day moving average



View as: [figure](#) [table](#) [map](#) [download the data](#)

Risk alert status by zip code (hover/click on zip for more info)



Key

[Click here to access downloadable data](#) (last updated July 21, 2020 at 09:00 EST)

To provide feedback including suggestions, omissions and errors, please contact us at [COVIDData@doh.gov](mailto:COVIDData@doh.gov)